

ÁRAS NUA-EALAÍNE
NA hÉIREANN
IRISH MUSEUM OF
MODERN ART

+353 1 612 9900
imma.ie

IMMA

**SECOND
LEVEL
SCHOOLS
IMMA
COLLECTION:
FREUD PROJECT
GAZE**

OCTOBER 2018 - MAY 2019

Ospidéal Rioga
Cill Mhaighneán
Baile Átha Cliath 8
D08 FW31, Éire

Royal Hospital
Kilmainham
Dublin 8
D08 FW31, Ireland

INTRODUCTION

These notes are designed for **second level students** and **teachers** preparing for a visit, during a visit, and after a visit to the exhibition *IMMA Collection: Freud Project Gaze*. The notes are not comprehensive or exhaustive but are intended to support secondary school **research** and **response** activities related to the exhibition.

This set of second level notes should be used as a supplement to the notes about the overall Freud Project, [IMMA Collection Freud Project student and teacher](#), as well as in conjunction with the general notes about visiting an exhibition [Visiting An Exhibition Part 1](#). Another recommended resource is the four page Exhibition Guide for *Gaze* [the exhibition guide](#). These three resources are available online at www.imma.ie.

If you are reading these notes on a screen, click on any [hyperlink](#) to access online information which will hopefully be of use, both in the gallery and in school. Most links will take you through to a relevant image or text in IMMA's online [Collection](#) database. There you can see an image of most of the artworks in question and find out more related details. Most of the following text is adapted from existing IMMA publications and online information. There are occasional links to other relevant gallery websites. IMMA's own online glossary [What is ?](#) contains an A-Z of information about art terms and concepts.

THE ARTIST LUCIAN FREUD

[Lucian Freud](#) (1922–2011) was a British painter and draftsman. He is widely recognised as one of the significant realist painters of the 20th-century and is renowned for his intimate and frank portrayal of the human form. He was born in Berlin, the son of a Jewish architect and the grandson of [Sigmund Freud](#). In 1933, at the age of 10, he and his family arrived in Britain, fleeing the rise of the Nazis. He attended art college in London in the early 1940s.

During his life Freud painted well-known people including Queen Elizabeth II, model Kate Moss and fellow artists Francis Bacon, Frank Auerbach and David Hockney. Working only from life, Freud's studio was intensely private. He worked mainly with those he was close to, often asking subjects to sit for hundreds of hours over multiple sittings.

Freud was the subject of numerous museum exhibitions and retrospectives, including the Centre Georges Pompidou, Paris; MoMA, New York; the Metropolitan Museum of Art, New York; Tate Britain, London; and at IMMA, Dublin in 2007. A major retrospective took place at the National Portrait Gallery, London in 2012, a year after the artist's death.

THE FREUD PROJECT AT IMMA

From 2016 to 2021, fifty-two artworks by Freud are on loan to the IMMA Collection by private lenders. Freud is perhaps best known for addressing the way we see the nude in art. However, the Freud works on view at IMMA are somewhat different as they explore several of the artist's other key themes, reflecting his interest in portraiture and the natural world. Among those represented are members of his family; his children, grandchildren, his mother Lucie, other artists and friends. The artworks at IMMA, mainly dating from 1970 onwards,

reflect his friendships and contacts within the racing world, his love of horses and dogs, and the relationships between human and animal sitters.

THE FREUD CENTRE AT IMMA

Freud's artworks are being predominantly presented in a dedicated **Freud Centre**, located in a stand-alone building at IMMA, the Garden Galleries. The Freud Centre is a base for research about the artist's practice and its contexts, as well as a programme of educational and academic events and activities, including talks and lectures.

EXHIBITIONS AS PART OF THE FREUD PROJECT

During this five-year period, IMMA is presenting a series of Lucian Freud related exhibitions under the overarching title the **Freud Project**.

1. From October 2016 to January 2018, the first presentation of the Freud Project created an [overview](#) of all the loaned artworks, featuring the entire fifty-two works in the collection and was on view for over a year. This exhibition was curated by Christina Kennedy: Senior Curator: Head of Collections and Johanne Mullan, Collections Programmer, IMMA. Works were not presented chronologically and were arranged to draw attention to styles, themes and subjects in Freud's work.
2. From February to September 2018, the second exhibition as part of the project was called [The Ethics of Scrutiny](#), curated by artist Daphne Wright. *The Ethics of Scrutiny* called into question how we see ourselves, how our gazes fall onto one another, and how our identities shift over time. The exhibition saw the addition of two further loaned works by Freud, *Two Brothers from Ulster*, 2001, and *Man in a Silver Suit*, 1998. Freud's paintings were shown

alongside the work and artefacts of others, including Emily Dickinson, poet; Sigmund Freud, psychoanalyst and grandfather of Lucian; Marlene Dumas, painter; and John Berger, writer and broadcaster.

3. The third exhibition as part of this project is called [Gaze](#) and is on view from 4th October 2018 until 6th May 2019. *Gaze* is curated by Johanne Mullan, Collections Programmer, IMMA, assisted by Emer Lynch, Curatorial Assistant, and Christina Kennedy, Senior Curator: Head of Collections and lead curator of IMMA Collection: Freud Project.

GAZE

Gaze continues to explore Freud's art practice, and the representation of the body in its many appearances. Each room within *Gaze* presents pieces from the Freud loan alongside other artists' works selected from the IMMA Collection.

As part of research activities related to visiting this exhibition, students should explore and compare dictionary definitions of the word **gaze**, but also explore contemporary thinking related to the idea of **the gaze**.

Gaze poses questions relating to gender, sexuality, and the male and female gaze. The exhibition also presents themes prevalent in Freud's work, such as self-portraiture, ageing, family, and the relationship between the artist and sitter. Alongside Lucian Freud, the exhibition includes work by **Stephan Balkenhol**, **Pauline Cummins**, **Thomas Ruff**, **Mark Manders**, **Ann Hamilton** and **Rebecca Horn**, among others.

As with most exhibitions, each artwork in *Gaze* can be viewed singly. But by positioning works by Freud with other works from the IMMA Collection, a space is created in which viewers experience the artworks in relation to each other, framed together by complementary and contrasting ideas of representation and portrayal. As viewers proceed through the series of rooms in the exhibition, they find rooms deliberately curated to consider the relationship between two gazes, the viewer's and the artwork's.

Consider the different ways the human body and face is presented throughout the artworks in the exhibition. Consider the various relationships evidenced in the artworks:

- **Between the artist and subject of the portrait** – Who is presenting this portrayal to you? Is it the artist's self-portrait or is the artist portraying somebody else? Can you sense the artist's point of view from looking at the subject in the artwork? When you look at the subject in the artwork, do you feel you are looking at them from the artist's position? If so, why?
- **Between the subject portrayed within the artwork** – Are there a number figures within the work? How do the figures interact with each other?
- **Between the subject of the portrait and you, the viewer** – Is the subject in the artwork looking back at you? If there are multiple subjects, are they all looking back at you? If not, what is the direction of each of their gazes? Are the subjects in the artwork portrayed as though they are "unaware" of your presence; or do they seem to know they are being observed? Do you feel you are looking at someone, a real person? If so, why? Or do you feel like you are looking at an object rather than a person? Again, if so, why?

Consider how each artwork is made, and what processes were used in its creation:

- The use of space if a three-dimensional form;
- The use of composition if a two-dimensional image;
- The use of traditional art media (paint, print, drawing, sculpture) or New Media (lens-based media, photography, film, video, and a range of digital technologies);
- The use of scale, big or small compared to the viewer;
- The use of colour, or the lack of it;
- The use of texture, and the qualities of the artwork's surface;
- The use of movement, sound, or lighting.

What effect do these elements have on you as a viewer? Do these elements, or lack of them, evoke sensations or emotions for you? Do they stimulate thought processes? If they do, what do they make you think about? Why?

Finally, consider each room: How are the various artworks in each room displayed and positioned on the walls and floor? Do the various artworks in each room relate to each other in some way? Is there a common theme or approach evidenced in the artworks? Or is there a common theme but a contrast in the ways different artists approach the same topic?

QUOTES FROM THE FREUD CENTRE

Do these words add to the way you look at the artworks on display? What insights do these words provide in understanding how some artists approach painting people from life?

Freud once remarked upon his special relationship with the National Gallery, London; he used it, **“as if I were a doctor. I come for ideas and help.”**

“I use the people to invent my pictures with, and I can work more freely when they are there.” Lucian Freud

“Do I have to tell you again to sit like an apple? Does an apple move?” Paul Cézanne

LUCIAN FREUD

IMMA COLLECTION FREUD PROJECT
Freud Centre
IRISH MUSEUM OF MODERN ART

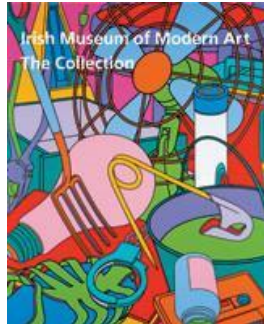
information and resources
for students and teachers



Lucian Freud
The Painter's Mother Reading, 1975

Here is a list of five selected Freud works which are displayed in this exhibition. Please use page numbers listed below as a link to more detailed content in **IMMA Collection Freud Project student and teacher** available online. This list includes the physical location of the actual painting in the

- [The Painter's Mother Reading](#), 1975 - page 8, in Gaze Basement
- [The Pearce Family](#), 1998 – page 9, in Gaze Basement
- [Head of a Girl](#), 1975 – page 10, in Gaze Ground Floor, Room 1
- [Reflection \(Self-Portrait\)](#), 1985 – page 11, in Gaze First Floor, Room 5
- [Guy and Speck](#), 1980-81 – page 12 in Gaze Basement

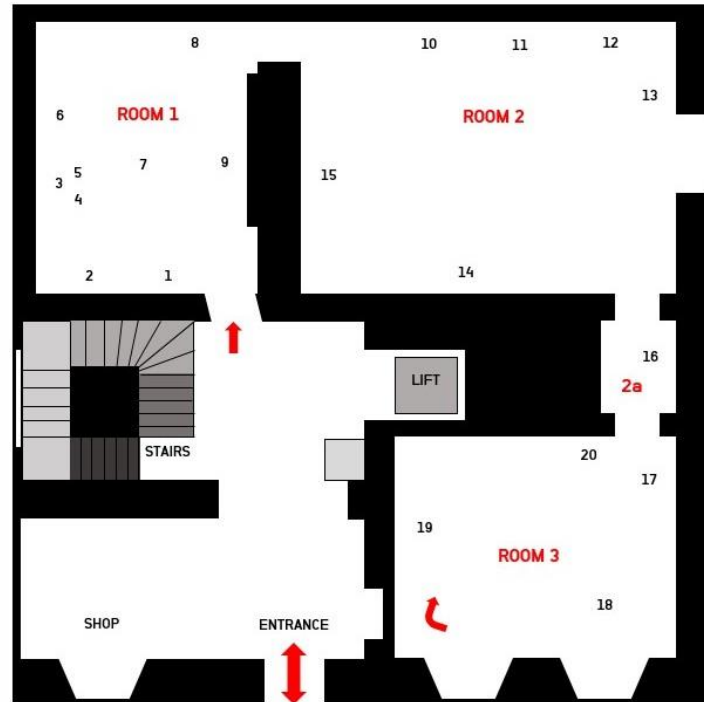


Here is a selection of some of the works from the IMMA Collection on view in *Gaze*. Each link takes you to IMMA's online Collection. If available, you should find an image and scroll down for written information about selected artworks.

Page numbers below refer to text about these artists' works in the colour catalogue of IMMA's Collection [Irish Museum of Modern Art The Collection](#). Regarding the two historical prints by Dürer and Rembrandt respectively, along with Edward McGuire's work, information is only online.

- Thomas Ruff, [Porträt 2001 \(A. Roters\)](#), 2001, Edition 1/4 - page 159, in *Gaze* Ground Floor, Room 2
- Hannah Starkey, [Untitled](#), August 1999 – page 171, in *Gaze* Ground Floor, Room 3
- Stephan Balkenhol, [Large Head](#), 1991 – page 50, in *Gaze* Ground Floor, Room 1
- Ann Hamilton, [The Picture is Still](#), 2001 Edition 3/3 + 2 A/P – info on artist page 81, in *Gaze* Ground Floor, Room 2a
- Rebecca Horn, [Take me to the other side of the ocean](#), 1991 – page 83, in *Gaze* Ground Floor, Room 3
- Edward McGuire, [Portrait of Paddy Collins](#), 1983 – online only/ ex catalogue, in *Gaze* Basement
- Albrecht Dürer, [The Great Horse](#), 1505 – in *Gaze* First Floor, Room 4
- Rembrandt van Rijn, [The Great Jewish Bride](#), 1635 - in *Gaze* First Floor, Room 5

GROUND FLOOR



ROOM 1

1. Lucian Freud *Albie*, 2003 – 2004
2. Lucian Freud *Portrait of Christopher Bramham*, 1989
3. Lucian Freud *Head of an Irishman*, 1999
4. Lucian Freud *Donegal Man* (2006)
5. Lucian Freud *Portrait of Donegal Man, Fragment*, 2006
6. Lucian Freud *Head of a Girl*, 1975 - 1976
7. Stephan Balkenhol *Large Head*, 1991
8. Lucian Freud *Head of the Big Man*, 1975
9. Lucian Freud *Donegal Man Profile*, 2007

ROOM 2

10. Phil Collins *Young Serbs (Caca)*, 2001
11. Phil Collins *Young Serbs (Vesna)*, 2001
12. Phil Collins *Young Serbs (Bojan)*, 2001
13. Phil Collins *Young Serbs (Milan)*, 2001
14. Thomas Ruff *Porträt 2001 (A. Roters)*, 2001
15. Lucian Freud *Bella and Esther*, 1987 - 1988

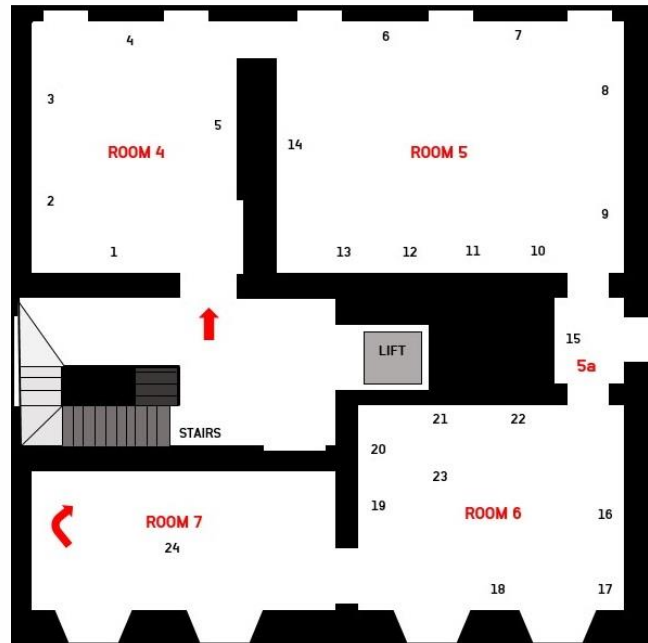
ROOM 2a

16. Ann Hamilton *The Picture is Still*, 2001

ROOM 3

17. Rebecca Horn *Cockfeather Mask, Performance II*, 1970-1995
18. Rebecca Horn *Take me to the other side of the ocean*, 1991
19. Hannah Starkey *Untitled*, August 1999
20. Lucian Freud *Landscape with Bat*, 1980

FIRST FLOOR



ROOM 4

1. Albrecht Dürer *The Great Horse*, 1505
2. Lucian Freud *A Filly*, 1970
3. Lucian Freud *Double Portrait*, 1985 - 1986
4. Dorothy Cross *Lover Snakes*, 1995
5. Lucian Freud *Triple Portrait*, 1987 - 1988
6. Lucian Freud *Bella in her Pluto T-Shirt*, 1995

ROOM 5

7. Annie Leibovitz *Louise Bourgeois, New York*, 1997
8. John Coplans *Self Portrait (Back and Hands)*, 1984
9. Lucian Freud *Reflection (Self-Portrait)*, 1985
10. Lucian Freud *Self-Portrait: Reflection*, 1996
11. Rembrandt van Rijn *The Great Jewish Bride*, 1635
12. Lucian Freud *The Painter's Mother Resting I*, 1976
13. Lucian Freud *Self-Portrait*, 1949
14. Lucian Freud *Two Irish Men in WWII*, 1984 - 1985

ROOM 5a

15. Lucian Freud *Man in a Check Cap*, 1991

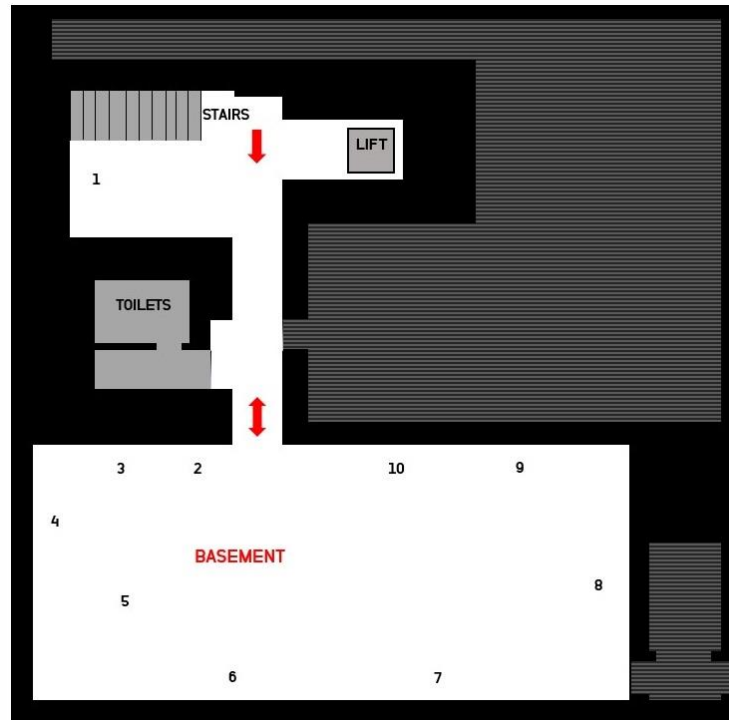
ROOM 3

16. Lucian Freud *Annabel*, 1990
17. Danny Osborne *Female Nude Seated*, 1972
18. Cecily Brennan *Melancholia I*, 2005
19. Marina Abramović *Art Must Be Beautiful Artist Must Be Beautiful*, 1975
20. Marina Abramović *Freeing the Body*, 1975
21. Lucian Freud *Kai*, 1991 - 1992
22. Lucian Freud *Naked Portrait, Fragment*, 2001
23. Edward Hopper *Nude*, c. 1920

ROOM 4

24. Pauline Cummins *Inis t'Oirr / Aran Dance*, 1985

BASEMENT



STAIRS

1. Jacob Epstein *Portrait of Lucian Freud*, 1947

BASEMENT

2. Lucian Freud *The Painter's Mother Reading*, 1975

3. Lucian Freud *Guy and Speck* 1980 - 1981

4. Edward McGuire *Portrait of Paddy Collins*, 1983

5. Mark Manders *Figure with Iron Ruler*, 2004

6. Lucian Freud *Man in a Silver Suit*, 1998

7. Lucian Freud *Two Brothers from Ulster*, 2001

8. Lucian Freud *The Big Man*, 1976 – 1977

9. Lucian Freud *Head of a Young Irishman*, 1999

10. Lucian Freud *The Pearce Family*, 1998

IMMA Collection: Freud Project is made possible through the support of the Freud Circle, and those donors that wish to remain anonymous.

Supported by



BNP PARIBAS

The bank for a changing world



The development of the Freud Centre has been enabled by capital funding from the Department of Culture, Heritage and the Gaeltacht.



An Roinn
Cultúir, Oidhreacht agus Gaeltachta

Department of
Culture, Heritage and the Gaeltacht