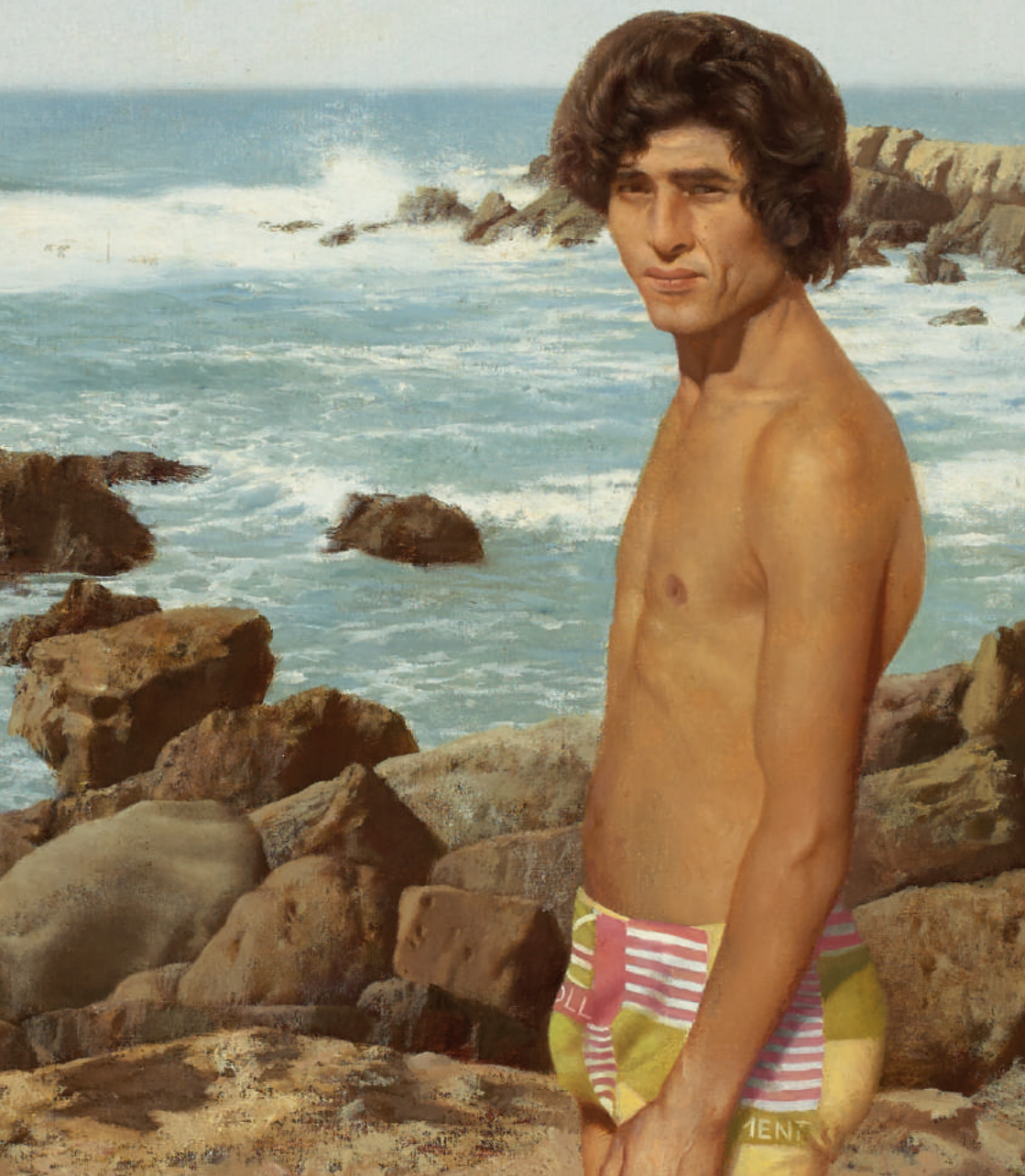


MAR - JUL 2016

# IMMA





## Patrick Hennessy

### De Profundis

24 March – 24 July / Main Galleries, East Wing

'A strange and exotic presence in Irish art', Patrick Hennessy RHA (1915-80) was one of Ireland's most successful post-war realist painters. A prolific artist he created traditional portraits, landscapes, equine studies and still-lives, but he also created works unlike anything being made in Ireland at the time. Fusing realism with a Surrealist subjectivity learned in Paris he painted human figures isolated in the landscape, male nudes and portraits of handsome men which puzzled Irish critics branding him '*something of an outsider*'. At a time when people were prosecuted for their sexual orientation, Hennessy made works containing narratives of homosexual life that align him with the emerging queer-art movement of the 1970s. This exhibition re-examines and repositions Hennessy's work as part of the IMMA Modern Irish Masters Series.

**IMAGE** Patrick Hennessy / In the Studio, 1944 / Oil on board / 45.7 x 35.5 cm / Private Collection / Image courtesy of James Adam and Sons Ltd / © The Artist's Estate

**COVER IMAGE** Patrick Hennessy / Kassim by the Sea, 1978 / Oil on canvas / 62.2 x 87.6 cm / J. W. Anderson Collection / Image courtesy of Whytes / © The Artist's Estate



## The Passion According to Carol Rama

24 March – 1 August / Main Galleries, East Wing

This first substantial exhibition of Italian artist Carol Rama's work comprises of almost 200 works and comes to Dublin following exhibitions in MACBA, Barcelona, Musée d'Art moderne de la Ville de Paris, and EMMA, Finland. Born in 1918 in Turin, Rama was never academically trained or explicitly faithful to any particular movement, except for the period of the "Movimento di Arte Concreta" (MAC), developing a body of work over seven decades that is as unique as it is obsessive. Ignored for decades by official art history for her challenge of the dominant narratives, Rama is now essential viewing for understanding the mutations of contemporary art and the work of artists such as Cindy Sherman, Kara Walker, Sue Williams, Kiki Smith and Elly Strik. Belatedly recognised in 2003, she was awarded the prestigious Golden Lion at the Venice Biennale.

**IMAGE** Image of Carol Rama in her studio / *Carol Rama in her atelier home, Turin* / © Photo: Pino Dell'Aquila, 1989. / © Archivio Carol Rama, Torino



MUSEU D'ART CONTEMPORANI DE BARCELONA

MUSÉE D'ART MODERNE DE LA VILLE DE PARIS



ESPOD MUSEUM OF MODERN ART



dylan

Official Hotel Partner  
www.dylan.ie



## IMMA Collection

Until 02 May / Garden Galleries

### Nick Miller and the Studio of Edward McGuire

Nick Miller was invited to respond to and work amongst the studio contents of the late artist Edward McGuire (1932-1986); donated to IMMA in 2009 by his wife Sally McGuire. Exhibition highlights are the display of studio contents and Miller's revisiting of McGuire's original sitters for a series of new portraits.

**IMAGE** Edward McGuire / *Exhibition & Archive Material – Studio Memorabilia Installation view* / IMMA 2015 Collection Irish Museum of Modern Art / Donated by Sally McGuire, 2009 / Photo: Nick Miller

### Approaches to paper

This exhibition explores the many facets of artists' studio practice. It includes work by artists Edward Allington, Antony Gormley, Alice Maher, Kiki Smith, Hermione Wiltshire and Bill Woodrow.

### Les Levine: Using the Camera as a Club – Media Projects and Archive

This exhibition includes a recent donation of several new photographic works by the New York-based Irish artist Les Levine, regarded as the founder of Media Art.



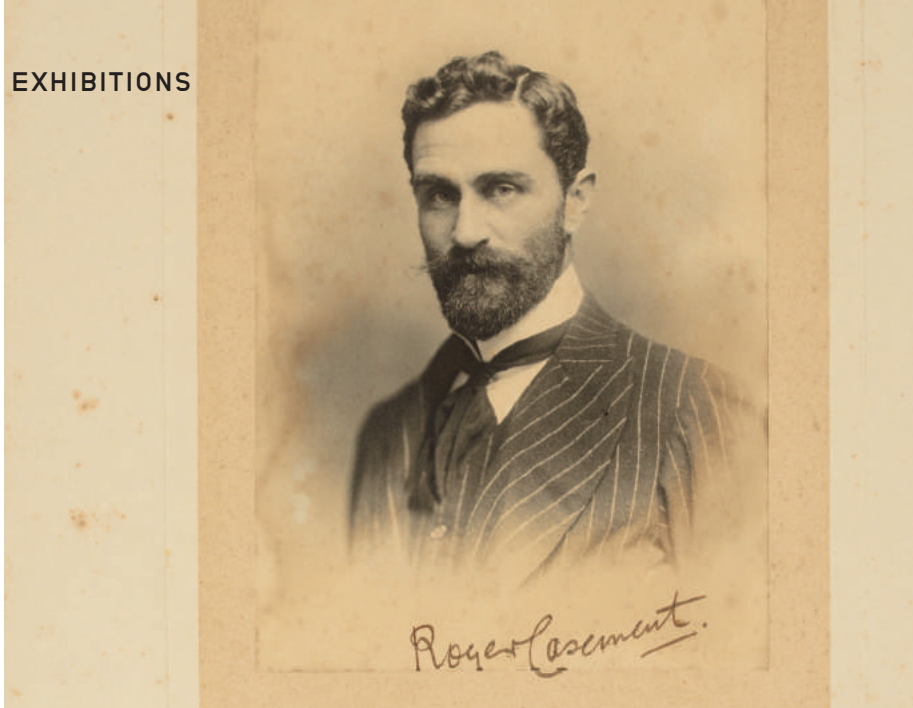
## IMMA Collection: A Decade

28 April – 31 December / Main Galleries, West Wing

IMMA, as the national cultural institution for collecting modern and contemporary art, aims to acquire examples of the most significant Irish art of the day as well as key works by international artists, many of whom have been part of the museum's temporary exhibition and residency programmes.

*IMMA Collection: A Decade* provides a snapshot of how the Collection has developed over the past 10 years. Works explore themes of memory, identity and place, questions of globalism, the environment and connectivity; from the local to the universal. Featured artists include Pierre Huyghe, Willie Doherty, Niamh O'Malley, Eva Rothschild, Dorothy Cross, Tim Robinson, Peter Hutchinson, Philip Taaffe, Howard Hodgkin, Maria Simonds-Gooding, Amanda Coogan and others.

**IMAGE** Willie Doherty / *Remains* / 2013 / High definition video (colour and sound) / Duration: 15 minutes / Edition 2/3 / Heritage Gift 2014



## Simon Fujiwara The Humanizer

20 May – 28 August / Courtyard Galleries, East Ground

Sir Roger Casement is a man born in the wrong age. An upstanding Irish nationalist and British civil servant, handsome, adored and fearless, he dedicated his life to fighting for the freedom of slaves. Yet his undoing comes at his own hands through his sexual proclivity towards the very slave men he fought to free and a series of tragic decisions push Casement towards the wrong side of history.

This new commission for IMMA by British/Japanese artist Simon Fujiwara, currently based in Berlin, is presented for the first time on the occasion of the centenary of the historic Easter uprisings of 1916. It takes the life of this compelling yet baffling figure through the conventions of the Hollywood narrative machine, presenting a compelling and bizarre biopic that exposes our current desires for the perfect Hollywood hero in an age where everyone is somebody.

**IMAGE** Portrait of Sir Roger Casement / Photo / CASIA / Courtesy National Library of Ireland

1916  
Clear Conscience  
 Civil Service  
 Conscience  
 Progress

 **GOETHE  
INSTITUT**  
SUPPORTED BY THE  
GOETHE-INSTITUT IRLAND

 **Matheson**  
NEW ART AT IMMA  
PROUDLY SUPPORTED BY MATHESON



## Grace Weir

### 3 Different Nights, recurring

Until 28 March / Main Galleries, West Wing

This is the first museum exhibition of one of Ireland's most compelling artists; Grace Weir. The exhibition includes three major new film commissions, *A Reflection of Light*, *Black Square* and *Dark Room*, which are contextualised with a group of over 30 works that span 20 years of Weir's creative output.

**IMAGE** Grace Weir / *Dark Room*  
(film still) / 2015 / HD video / 7'30"  
/ Courtesy of the artist



## Chloe Dewe Mathews

### Shot at Dawn

Until 28 March / Courtyard Galleries, East Ground

*Shot at Dawn* is a haunting new body of work by the British photographer Chloe Dewe Mathews that focuses on the sites at which British, French and Belgian troops were executed for cowardice and desertion between 1914 and 1918.

*Shot at Dawn* is commissioned by the Ruskin School of Art at the University of Oxford as part of 14-18 NOW WW1 Centenary Art Commissions. Sponsored by Genesis Imaging and supported by the National Lottery through Arts Council England and the Heritage Lottery Fund and by the British Council, Government of Flanders, John Fell OUP Research Fund and Van Houten Fund.

IMMA TALKS is a dynamic programme of talks and events that opens up conversations around our exhibition programme and permanent IMMA Collection, bringing you deeper into the thinking and making of contemporary art.

**Curators Lunchtime Talk Series**  
**Meeting Point, Main Reception, IMMA**

Join curators for an insightful walkthrough of current exhibitions.

**Fri 4 March, 1.15 – 2pm**  
**Nick Miller and the studio**  
**of Edward McGuire**

Johanne Mullan, Collections, IMMA

**Fri 6 May, 1.15 – 2pm**  
**The Passion of Carol Rama**

Rachael Thomas, Exhibitions, IMMA

**Wed 1 June, 1.15 – 2pm**  
**Simon Fujiwara, *The Humanizer***

Karen Sweeney, Exhibitions, IMMA

**Saturday 23 July, 1.15 – 2pm**  
**Patrick Hennessy's, *De Profundis***

Sean Kissane, Exhibitions, IMMA

**Art | Memory | Place – Talk Series**

Hong-An Truong and Maya Schweizer, present film works in the Project Spaces from 23 Feb to 3 April. Both artists discuss their practice and research on issues of trauma and memory.

**Artists Talk: Hong-An Truong**  
 Thurs 10 March, 6 – 7pm, Project Spaces

**Artist Conversation:**  
**Maya Schweizer & Maeve Connolly**  
 Tues 15 March, 6 – 7pm, Project Spaces

**The Passion of Carol Rama**  
**Curators Conversation**  
**Wed 23 March, 6.30 – 7.30pm /**  
**Johnston Suite**

Teresa Grandas and Paul B. Preciado (DOCUMENTA 14) explore how Rama's work offers anarchic representations of female sexuality, gender and politics which allow an essential revision of avant-garde movements of the last century. Followed by the exhibition preview and opening party.

**Begin Anywhere | Third Level Forum**  
**Tues 5 April, 2pm – 5.30pm / North Wing**

Inspired by the words of John Cage, '*begin anywhere*' invites undergraduate students to participate in an artist-centred conversation about artistic practice after art school. Presentations will explore the practices of artist-led spaces, independent curators and resource organisations, and will provide opportunities for students to exchange ideas, pose questions and make connections. This forum caters for all third-year and fourth-year BA art students in Ireland who are interested in gaining a deeper insight into developing a practice within the arts sector. *Begin Anywhere* is in collaboration with IADT: ARC.





### Modern Irish Masters Series

Curator's Lecture | Patrick Hennessy  
*De Profundis*

Sun 10 April, 3 – 4pm / Johnston Suite  
Seán Kissane (Curator, Exhibitions, IMMA) presents a keynote lecture offering a new perspective on the work of Irish artist Patrick Hennessy. This talk will give rich insights into Hennessy's images which address themes such as war, religion, gender and sexuality.

### What is...? theory strand

What is Phenomenology? | Francis Halsall & Declan Long

Sat 16 April, 12noon / Lecture Room  
Continuing with the talk series *What is...?* this talk introduces the theoretical framework of phenomenology as a concept to explore the structure of consciousness, aesthetics and our experiences of the contemporary art object. The *What is...?* theory strand is in collaboration with MA Art in Contemporary World, NCAD.

### Art | Memory | Place

Lecture: *Deranging Memory: Institutions and Proclamations*

Friday 22 April / Lecture Room  
Gerry Kearns (Maynooth University) considers the place of objects, commodification, institutions and texts as resources for postcolonial memory. He

discusses the Turner-prize-winning work of Duncan Campbell, (*It for others*, 2013), the reflections of Jonathan Swift upon madness, and the complexity of engaging with the Proclamation of 1916.

### IMMA Commissions

Artists Discussion | Simon Fujiwara

Fri 20 May, 1 – 2pm / Lecture Room  
Artist Simon Fujiwara explores ideas of collective memory, national heroism and our treatment of biography and history over the last century, as it relates to a new work commissioned by IMMA on the occasion of the centenary of 1916. Moderated by Rachael Thomas.

### Seminar | Gender, Identity and the State April

Comprising of presentations by artists, writers, curators and educators, this seminar address issues of gender, sexuality, identity and the state as it relates to the work of artists Hennessy, Rama and others. Participants will draw on critical and queer theory across a wide range of disciplines. See website for further details.

Booking is essential. For a full public programme of talks, events and free tickets visit [www.imma.ie](http://www.imma.ie).



IMMA has a broad range of programmes to engage audiences of all ages. Please visit [www.imma.ie](http://www.imma.ie) for more upcoming activities.

#### **Families**

**Holiday Family Workshops – Mornings at the Museum**

Have some creative family time during the holidays. Children and grown-ups can enjoy visiting an exhibition and making artworks together in the gallery. Drop-in to the main IMMA reception at 10am.

#### **February Mid-term:**

10 – 11am / Wed 17 & Thu 18 Feb

#### **Easter Break:**

10 – 11am / Wed 23 & Thu 24 Mar  
and Wed 30 & Thu 31 Mar

#### **Summer Holidays:**

During July,  
Thursday and Friday mornings,  
10 – 11am / Thu 7 & Fri 8 Jul  
to Thu 28 & Fri 29 Jul

#### **Weekly Family Workshop – Explorer**

Sun 2–4pm / Until 29 May

Get creative together as a family, explore artworks with IMMA staff, and enjoy a hands-on workshop in the galleries.

#### **Teens**

Meet artists, explore exhibitions, discuss ideas, and make artworks in the studios during the summer holidays - a great way to learn about and experience present-day art. For details about forthcoming activities in July/August or to subscribe to our teens emailing list, please see [imma.ie](http://imma.ie).

## FAMILIES, YOUNG PEOPLE, ADULTS & GROUPS

### IMMA25

Programming by 18-25s for 18-25s, the IMMA25 collective present tours, discussions, workshops, collaborative projects, and more, all in association with IMMA's programme. If you want to learn more, find out what we've been up to, or keep an eye out for upcoming events please see [imma.ie](http://imma.ie). To get involved or to join our email list just contact us on [imma25@imma.ie](mailto:imma25@imma.ie)

### Adults

#### Studio10

Studio10 is a popular programme for adults of all levels of creative experience and includes tours, discussions, and art-making. There are three blocks of three consecutive weekly sessions, with each block addressing a current exhibition. Based from IMMA's Studio 10, it takes place on Fridays 10am-12.30pm on the dates below. Studio10 is free and no booking is required. Just turn up on the day.

4, 11, 18 Mar, exhibition focus:

*IMMA Collection: Les Levine: Using the Camera as a Club – Media Projects and Archive*

8, 15 & 22 Apr, exhibition focus:

*Patrick Hennessy, De Profundis*

13, 20 & 27 May, exhibition focus:

*IMMA Collection: A Decade*

### Schools

**Are you a teacher at primary or second level?**

Why not join IMMA's dedicated online mailing list for teachers? You can keep up to date with relevant events, exhibitions, tours, resources, and workshops developed for students, art teachers, or visual arts co-ordinators. Go to [imma.ie](http://imma.ie), click on Join Our Mailing List and subscribe to your choice of newsletters.



IMMA's onsite residency offers artists, curators and creative professionals an opportunity to live and work at IMMA for research and production focused residencies. This unique programme is open to the national and international cultural community offering participants the opportunity to cultivate new directions in their work.

This year IMMA will embark on a collaborative project with Grizedale Arts, an established artists' organisation in the UK, with both residencies running their programmes as one. Projects start in the Spring when we take on the task of developing an emulation of a model village in the courtyard of IMMA, complete with industry, education, housing and small holdings. Including the thoughts and actions of a curious stream of people, communities and collectives from all over the world, we hope this project will also attract lots of interested audience participants.

In 2016 IMMA's residency will also provide a number of production residencies working with NCAD Dublin / The Fulbright Commission of Ireland / EVA International / Temple Bar Galleries + Studios / The Project Arts Centre / Linda Shevlin (Curator in residence Roscommon County Arts Office) and M12 Studio.

### Project Spaces

IMMA's Project Spaces present a variety of exhibitions, interventions, events and discussions that reflect contemporary art practice and consider how a museum engages with its Collection, artists, curators and visitors.

#### Art | Memory | Place

**Hong-An Truong and Maya Schweizer**  
23 Feb - 3 April

Art | Memory | Place is a 2016 programme that focuses on artists whose work addresses the wider context of memory studies against the backdrop of the 'decade of centenaries' in Ireland. This exhibition includes *Tell Me Terrible Things They Have Known* (2014); *A Measure of Remorse* (2009) by Hong-An Trong and *Le soldat mourant des Mille / The dying soldier from Les Mille* (2014) by Maya Schweizer.

#### statecraft

**16 March - 3 April, 2016**

Interweaving the histories of two entities—IMMA's Residency Programme and the Free International University model advocated by Joseph Beuys & Dorothy Walker—students from the IADT Masters in Art and Research Collaboration (ARC) will turn the IMMA Project Space into an experimental public research-hub. They will create an open space for the investigation of living and making, to explore how practice and art thinking can produce alternative forms of 'statecraft'.



DATE FOR YOUR DIARY  
IMMA SUMMER PARTY

SAT  
16TH  
JULY



## Private Occasion Exciting New Space to Hire

Due to its breathtaking surroundings and prime location, the RHK is fast becoming one of Dublin's most sought after wedding venues. Unique in our offering to couples we provide exclusive use of a 17th Century Baroque Chapel, landscaped formal gardens as a backdrop for photographs and a lavish Great Hall for dining and drinks receptions.

**CONTACT** Our Events Team  
on 01 6129903 / [info@rhk.ie](mailto:info@rhk.ie)

## IMMA Shop New Location!

The IMMA Shop has moved to the second floor of the Main Galleries where we now stock an exciting range of Irish design, Limited IMMA Art Editions, cards and postcards, art books and magazines alongside all publications and catalogues produced by the Museum. Perfect for unique gifts or a souvenir of your IMMA visit.

**SHOP ONLINE**  
[www.theimmashop.com](http://www.theimmashop.com)

**Opening Hours**

**TUES – FRI** 11.30am – 5.30pm

**SAT** 10.00am – 5.30pm

**SUN & BANK HOLIDAYS** 12noon – 5.30pm

**MONDAYS** closed

**LAST ADMISSION** 5.15pm

Admission free except for occasional special exhibitions.

**Visitor Facilities**

Fully accessible by wheelchair users, Manual wheelchairs are available on a first-come first served basis. Adapted toilets, baby changing facilities and a locker room are available. A lunchroom for children’s groups is also available, book two weeks in advance, tel 01 6129900.

**Getting here**

The Main Museum entrance is on Military Road.

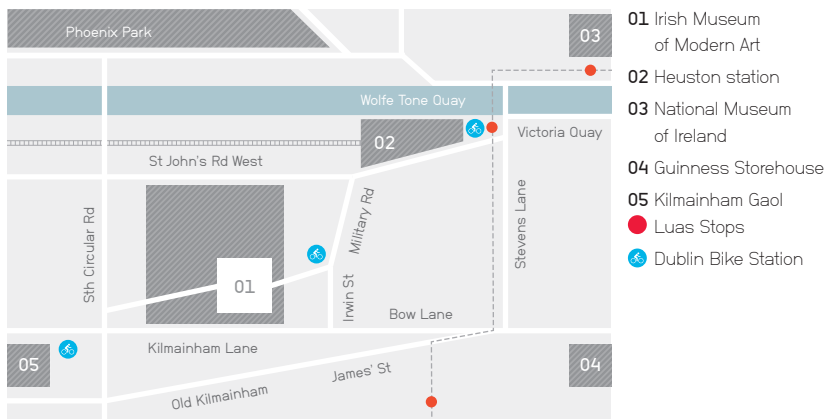
**BY LUAS** Red line to Heuston Station (8 minute walk via Military Rd)

**BY BUS** Buses to Heuston Station (8 minute walk via Military Rd): 26 from Pearse St, 51, 79 from Aston Quay, 145 from Bray.

**BY TRAIN** 8 min walk from Heuston Station. From Connolly Station take the Red line Luas to Heuston Station.

**BY CAR** 10 minute drive from city centre. Pay & display car park, €2 for first three hours.

**DUBLIN BIKES** Dublin Bikes Stations on Military Rd and in Kilmainham.



Irish Museum of Modern Art  
 Royal Hospital, Military Road  
 Kilmainham, Dublin 8  
**T** +353 (0)1 6129900  
**E** info@imma.ie  
**W** www.imma.ie



IMMA

MEMBERS GET MORE



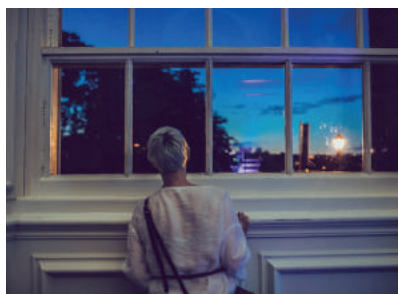
## IMMA MEMBERSHIP

Get More... and help IMMA  
to do more

Join today and enjoy free entry to IMMA exhibitions, exclusive access to curators and artists, discounts in our shop and a free coffee on us!

### Get more and help IMMA to do more

Whether you choose to become a Member, Supporter, Benefactor or Patron, you will become part of a visionary group of art lovers whose support allows IMMA to achieve our ambitious programme of exhibitions, our far-reaching and innovative education programmes and to care for and develop Ireland's National Collection of modern and contemporary art, the IMMA Collection.



IMAGES @ Dara Munnis

IMMA

JOIN TODAY



Join today and enjoy free entry to IMMA exhibitions, exclusive access to curators and artists, discounts in our shop and a free coffee on us!

**For just €50 per year you will:**

**Pay Less**

- Get unlimited free entry to paid exhibitions\* for you and a friend.
- Avail of 10% IMMA Shop and 20% IMMA Art Edition discounts.
- Have a coffee on us! 5 Free coffees/teas per year in the Itsa@IMMA Café.

**Get More**

- IMMA Event Guide posted to your door
- Invitations to VIP previews.
- Receive a bespoke members calendar of events with artists and curators including national day trips, city gallery tours and behind the scenes access to the IMMA Collection.
- Priority seating for IMMA TALKS.

The more you give the greater the access.

IMMA Supporters, Benefactors and Patrons receive additional benefits including exclusive curator's tours, studio visits, artist dinners, National and International Trips, VIP previews, priority access to International Art Fairs including Frieze London, free catalogues and invitations for your guests to our exclusive Member's events.

IMMA Family	€100
IMMA Supporter	€150
IMMA Benefactor	€350
IMMA Gold Benefactor	€500
IMMA Silver Patron	€1,000
IMMA Gold Patron	€2,500
IMMA Platinum Patron	€4,000

IMMA Memberships also make excellent gifts.

\*Approximately one per year

For full information on each of these levels please visit [www.imma.ie](http://www.imma.ie)

WWW.IMMA.IE



Name .....

Address .....

Phone Number ..... Email .....

**Please tick Membership option ✓**Individual €50  Concession €30  Family €100 Supporter €150  Benefactor €350  Gold Benefactor €500 Silver Patron €1,000  Gold Patron €2,500  Platinum Patron €4,000 **Method of Payment**Credit Card  Mastercard/Visa  AmEx/Visa Debit 

Card Number .....

Expiry Date .....

Name of Cardholder .....

Signature ..... Date .....

Billing address if different from above:

.....

.....

**Paypal** – please visit [imma.ie](http://imma.ie) and click on Join and Support IMMA.

Click on your preferred Membership level and you will be brought to PayPal to checkout.

**Cheque**

I enclose a cheque made payable to IMMA for € .....

**Please return to:**

Stephen Taylor, Membership, IMMA, Military Rd, Kilmainham, Dublin 8, Ireland.

If you would like to pay monthly/annually by direct debit please tick here and we will send you a direct debit form to you via email above. If you would like this to be a gift membership please tick this box and we will get in touch to get details of the recipient.

IMMA MEMBERSHIP

**JOIN AND  
SUPPORT  
IMMA**

[WWW.IMMA.IE](http://WWW.IMMA.IE)