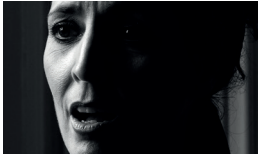


OCT 2016 – JAN 2017

IMMA MEMBERS CALENDAR

WWW.IMMA.IE

1

**OCTOBER****Meet the Artist / Jaki Irvine: *If The Ground Should Open...***

Thurs 6 Oct, 7pm / An exclusive opportunity to visit Jaki Irvine in her studio at Temple Bar Gallery & Studios and discuss her new commission for IMMA *If the Ground Should Open...*

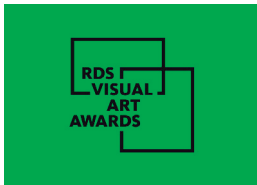
2

**Curators Walkthrough / Invited Curators: *The Plough and other stars & Historica - Republican Aesthetics***

Wed 12 Oct 7pm / Join IMMA curator Seán Kissane on a walkthrough of this new initiative where independent curators Kate Strain (Ireland) and Sumesh Sharma (India) have been invited to curate two concurrent exhibitions.

**VIP Preview / IMMA Collection Freud Project 2016 –2021**

Thurs 20 October 6.30pm / IMMA has secured a five-year loan of 50 works by Lucian Freud (1922-2011), considered one of the greatest realist painters of the 20th-century. Join us for the exclusive opening of this extraordinary new project in the company of Minister Heather Humphreys T.D. and Freud's long-time friend and Studio Assistant David Dawson.

**Exclusive Tour / RDS Graduate Show**

Thurs 27 Oct, from 12pm / An exclusive tour with IMMA senior curator Sean Kissane of the inaugural RDS Visual Arts Awards Exhibition of which he was a judge. The exhibition has been curated by Irish artist Alice Maher and focuses on emerging artists and recent graduates. A lunch reservation will be made at the RDS (€15 charge per person). Lunch: 12pm, tour: 1.30pm.

3

**NOVEMBER****Artist response / Freud Project**

Thurs 3 Nov, 7pm / To celebrate the launch of this landmark project IMMA Members are invited to join Irish artist Mick O'Dea, President of the RHA, for an exhibition walkthrough and a discussion of how Freud influenced O'Dea as an emerging artist, and his analysis of Freud's practice and style.

**IMMA Members Art and Design Day Trip / Kilkenny and Carlow**

Sat 12 Nov 10am / Following our successful trip North in July this tour will take in the Butler Gallery Kilkenny for an exhibition by Kevin Cosgrove, the National Craft Gallery for *Future Makers* and Visual in Carlow to view exhibitions from Hughie O Donoghue, Tim Hetherington and the group show *Stormy Petrol*. Bus departs IMMA at 10.15am returning at 6.30pm. A charge for bus and lunch will apply. Details to follow.

4



Winter Opening / New work by Duncan Campbell and Emily Jacir

Fri 25 Nov / Join us for Dublin Gallery Weekend to celebrate the opening of a new film work from 2014 Turner Prize winner Duncan Campbell and *Europa*; a major survey from Palestinian artist Emily Jacir. Hennessy Art Fund will also be open on the evening with new works on display from Kevin Atherton, David Beattie and Dennis McNulty.



DECEMBER

Living at IMMA / behind the scenes at the IMMA Residency Programme

Sat 3 Dec, 2–3.30pm / Join IMMA Curator Janice Hough for a behind the scenes look at the studios and an overview of the Residency programme. Resident artist Aideen Barry will share her experiences of living at IMMA with her young family and you will have the opportunity to visit Irish artist Maggie Madden in her studio.



IMMA Members Christmas Cheer

Thurs 15 Dec. 6.30 – 8pm (25% discount applies all day) / Celebrate the season with an exclusive 25% off everything day at the IMMA Shop, enjoy some festive refreshments and hear from IMMA Director Sarah Glennie as she reflects on the highlights of 2016.



JANUARY 2017

We Love Dublin 8 / Tour of Pallas Projects and Teelings Distillery

Thurs 12 Jan 2017, 6pm at Pallas Projects, 115–117 The Coombe Dublin 8 / We kick start 2017 with an exploration of Dublin 8, starting with a visit to Pallas Projects to view the exhibition *Periodical Review #5 – Pallas Projects & NCAD Gallery* and then move on for a guided tour, tasting and whiskey cocktail at the Teelings Whiskey Distillery in Newmarket Square.

BOOKINGS

To book any of these events please email stephen.taylor@imma.ie or ph 01 612 9954

5



IMMA COLLECTION FREUD PROJECT

FREE FOR MEMBERS + GUEST

Don't forget that IMMA Members can avail of unlimited FREE entry to the Freud Project for themselves plus a guest.

Get closer to art with IMMA and Dean Dublin

As our official Hotel Partner all Dean Dublin guests can access these exclusive IMMA Members events. Please contact the hotel front desk before or during your stay to book your place.



Official Hotel Partner

IMMA relies on the generosity of our Members to provide excellence in the visual arts. Since IMMA reopened at the Royal Hospital Kilmainham in October 2013, your invaluable support has enabled us to present world class exhibitions, to welcome school and college groups from throughout the country, programme a wide range of talks, lectures, discussions, and international symposia and to launch our collection and talks archive online.

Be part of IMMA's Future

We hope you will continue to support IMMA and encourage your friends and family to become members. Individual Membership starts at just €50 and includes complimentary access to the IMMA Collection Freud Project (2016 – 2021) for members plus a guest, making an excellent gift for all occasions. Why not become a Benefactor or Patron and enjoy exclusive benefits such as Artists' Studio Visits, Artist and Patron Dinners with IMMA Director and Curators and VIP trips to international Art Fairs. Join, renew or purchase gift membership today at www.imma.ie

[1] *If The Ground Should Open...* / 2016 detail / Courtesy of Jaki Irvine, Kerlin Gallery & Frith St. Gallery

[2] *Quilt Me A Story* 2015 / Leftover scraps of cloth / Dimensions variable / Saviya Lopes

[3] *Double Portrait* / 1985–86 (oil on canvas) / Freud, Lucian (1922–2011) / Private Collection / © The Lucian Freud Archive / Bridgeman Images

[4] *Film Production Still* / Photo Rina Yang

[5] *Reflection (Self Portrait)* / 1985 (oil on canvas), Freud, Lucian (1922–2011) / Private Collection / © The Lucian Freud Archive / Bridgeman Image

IMMA Members enjoy priority seating for all IMMA TALKS.

See imma.ie for current listings and contact Stephen for further details, or to reserve your place for IMMA Members or IMMA TALKS events.

Irish Museum of Modern Art
Royal Hospital, Military Road
Kilmainham, Dublin 8

T +353 (0)1 6129954
E stephen.taylor@imma.ie
W www.imma.ie