

education / community programme

The Education and Community Programme aims to create access to the visual arts by developing new audiences, which are both engaged and informed, through a broad range of programmes and projects, and to develop good practice in the field of arts education through action research projects.

Mediator Talks

Free guided tours every week on Wednesday, Friday and Sunday at 2:30pm. No booking is required and tours depart from the main reception area.

Guided Visits

Group leaders and educators can book free guided visits to IMMA's exhibitions for their classes and groups. Booked tours are available Tuesday - Friday 10.00am, 11.45am, 2.30pm and 4.00pm. Tours are 45 minutes in duration. There are restrictions to group size (32 maximum). Two adults should accompany each primary class. To book please contact the information desk at least three weeks in advance of your intended visit tel: 01 612 9967, email: frontofhouse@imma.ie

Explorer for Families

Explorer invites families to visit selected artworks in the company of two of IMMA's gallery staff, the Mediators. Children and adults participate in an art project based on their experience in the galleries. Explorer is available, free of charge, from 2.00pm to 4.00pm every Sunday until 3 June. Early arrival is advised as the number of participants is limited to 35. The project theme is repeated every second Sunday. Booking is not required. Explorer returns after the summer break on Sunday 7 October.

Charcoal & Chocolate

This programme is an introduction to contemporary art through drawing for adults. It runs in four week modules from February until late May with artists Brian Fay, Róisín Lewis and Christine Mackey. The programme is fully booked for 2007.

Studio 10

This is a programme for older people on Friday mornings to meet artists, visit galleries and find a creative space in Studio 10. Studio 10 is open from 10.00am – 1.00pm until 25 May. The workshops are facilitated by artist Claire Halpin and an IMMA Mediator. Studio 10 is free and returns after the summer on 14 September.

Focus On...Group Programme

Focus On... provides an introduction to IMMA for groups. Projects have a maximum of six sessions over a period from six weeks to six months and are facilitated by an artist from the Artists' Panel and an IMMA Mediator.

Drawing Day 2007

Along with other galleries and museums across Ireland, IMMA celebrates its second Drawing Day on Saturday 26 May. The importance of drawing will be highlighted through gallery visits, workshops, films and talks. The events are free and open to all but some workshops must be booked in advance.

For information or booking of Studio 10, Focus On... or Drawing Day please contact Mark Maguire, Curator: Education and Community Department, IMMA, tel: 01 6129912, email: mark.maguire@imma.ie

Mapping the Territory '07

Round Table Forum for the Museum, Arts and Formal Education Sectors

Tuesday 29 May

This event follows the inaugural meeting initiated by IMMA, the Heritage Council and The Ark, A Cultural Centre for Children where a cross-section of professionals met to explore collaborative practice with children and young people across these sectors. The aim of this upcoming meeting is to explore the feasibility of a national network and is co-funded by the Arts Council. A report from the meeting held in October 2006 is available to download from www.ark.ie

In-Career Development Courses

A five day summer in-career development course for primary school teachers, approved by the Department of Education and Science, will run from 20 – 24 August. The course introduces teachers to IMMA as a learning resource and provides opportunities to experience IMMA artworks and meet and work with artists in IMMA's studios. The fee for the course is €60.00.

IMMA Primary School Programme 2007

The IMMA Primary School Programme for the 2007/2008 academic year will begin by focusing on the work of Miroslaw Balka for 4th – 6th class groups. Please go to www.imma.ie from May for booking for 4th – 6th class, 1st – 3rd class and infant classes. There is a booking fee of €25.00 per class.

For further information go to www.imma.ie or contact Rowan Sexton, Project Worker; Children's Programmes: Education & Community Department, IMMA, tel: 01 6129914, email: rowan.sexton@imma.ie

Talks and Lectures

The Irish Museum of Modern Art's regular series of talks and lectures gives the general public and targeted audiences a unique opportunity to meet and interact with a cross section of artists, curators and specialists. The Museum aims to present a broad range of talks and lectures reflecting and debating the Museum's diverse programme of temporary exhibitions, the Collection and aspects of the Education and Community Programme. A detailed brochure outlining the current programme is available from the main information desk.

For further information on the Talks and Lectures Programme, please contact Aoife Ruane, Assistant Curator: Education and Community Department, IMMA, tel: 01-6129913, email: aoife.ruane@imma.ie

artists' residency programme

The Artists' Residency Programme is an international studio/residency programme located in the studio blocks at IMMA. The Programme provides opportunities for artists to research and develop their practice. It supports both emerging and established artists, working in any medium by application or invitation and is open to Irish and international artists. There are two application deadlines yearly, 31 March and 30 September. Visitors are invited to meet participating artists in their studios as the artists' schedules permit. Studio visits should be requested at least two weeks in advance of your preferred date. Talks, panel discussions, open days and workshops, which are free and open to the public, are arranged in association with the artists' residencies. Work in progress from participating artists can be seen in the Process Room, First Floor Galleries.

Studio 3A	Paddy Jolley (Ireland)	Until May
	Alberto Peral (Spain)	June - August
Studio 3B	Richard Saxton (USA)	July - August
Studio 6A	Martin Healy (Ireland)	Until September
Studio 11	Naomi Seki (Japan)	Until June
	Jered Sprecher (USA)	July - August
Studio 12	Jorge Satorre (Mexico)	Until May
	Clive Murphy (Ireland)	June - September
Studio 13	Giles Round (UK)	May - September
Studio 14	Ciaran Murphy (Ireland)	Until September

Information on participating artists, application forms and updated schedules on the Process Room and other Artists' Residency Programme events are available from Janice Hough, Artists' Residency Programme Co-ordinator, tel: 01 612 9905, email: janice.hough@imma.ie or download from the Museum's website at www.imma.ie.

national programme

The National Programme is designed to make the Museum's assets, skills and resources available in a variety of situations and locations in Ireland. Using the IMMA Collection, the National Programme facilitates the creation of exhibitions and other projects for display in a range of locations around the country. The National Programme establishes the Museum as inclusive, accessible and national.

Until 7 May I An exhibition of works selected by Maura and George McClelland from their personal Collection and from the McClelland Collection at IMMA

Féile na Bealtaine, Clós na BhFiodóirí, Dingle, Co Kerry

This exhibition is being shown as part of IMMA's longstanding relationship with Féile na Bealtaine. Catherine Marshall, former Senior Curator: Head of Collections, IMMA, will discuss the inspiration behind creating a collection such as the McClelland's in Collector's Choice: Bringing it All Back Home at Siopa na BhFiodóirí, Daingean Ui Chuis at 11.00am on 1 May 2007. Tel: 066 915 1688. The exhibition will be accompanied by a series of workshops supported by the Department of Education and Science.

Until 7 May I Roots, Beanstalks and Growing Up

Wexford Arts Centre, Wexford, Co Wexford

Art Alongside aims to provide a dynamic experience of the visual arts to children and adults of Co Wexford. Each year, artists exploring a specific theme work with primary school children. The current project is based on the theme of growth and includes work by Tom Molloy, Thomas Ruff and Vik Muniz. Children from nine Co Wexford primary schools have been involved in a range of projects connected to the theme. A selection of this work will be exhibited in the Wexford Arts Centre alongside works from the IMMA Collection on the same theme. IMMA staff will facilitate workshops supported by the Department of Education and Science.

24 May – 4 June I Our Fragile Earth

Iniscealtra Festival of the Arts, St Caimin's Church of Ireland, Mountshannon, Raheen Hospital and Scariff, Co Clare

Our Fragile Earth includes work by Patrick Collins, Marie Jo La Fontaine, Clare Langan and Tom Molloy. Works from the IMMA Collection will also be placed in three venues in Scariff. Clare-based artists Nicola Henley and Jane Seymour will facilitate workshops in response to the exhibition with primary school students supported by the Department of Education and Science.

6 - 28 June I Súil Eile

Ballina Arts Centre, Ballina, Co Mayo

This exhibition is the result of a collaboration between Ballina Active Retirement Group, Ballina Arts Centre and IMMA. This project is curated by Ballina Active Retirement Group and explores new media works in the IMMA Collection.

28 June – 3 Sept I Passenger

Waterford Healing Arts Trust, Waterford, Co Waterford

Waterford Healing Arts Trust in partnership with the National Programme invited staff members of Waterford Regional Hospital to curate an exhibition of work from the IMMA Collection. The process involved a series of discussions and visits to IMMA. The panel of staff from various departments within the hospital explored the curatorial process and the behind-the-scenes work involved in selecting, presenting and publicising an exhibition.

For further information on any aspect of the National Programme, please contact Georgie Thompson, National Programmer, IMMA, tel: 01 612 9909, email: nat.programme@imma.ie

IMMA Members

Join our new Membership scheme today and enjoy IMMA more. Your support will help us to develop our activities and share our Collection and programmes with thousands of visitors from around the world. There are several membership categories with many benefits and privileges available to you in thanks for your generosity. For further information please pick up an IMMA Members brochure at the museum, visit our website www.imma.ie or contact the Development Office, IMMA, tel: 01 612 9902, email: members@imma.ie

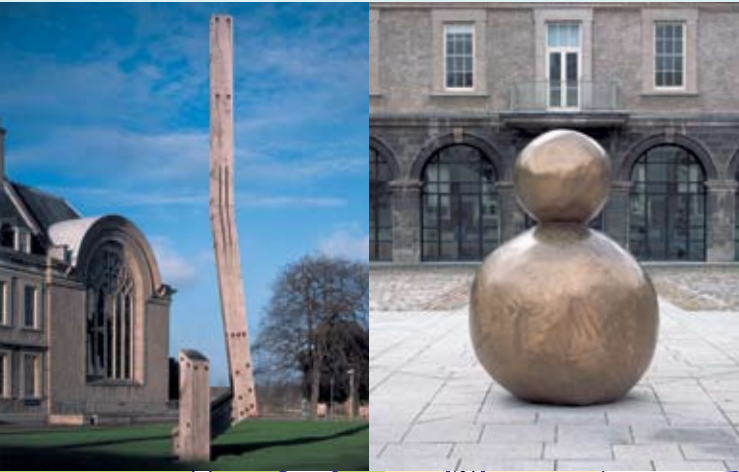
IMMA Editions

IMMA is pleased to offer a number of limited editions for sale. These editions are the result of the generosity of several artists towards the Museum. Limited editions by the following artists are now available: Francesco Clemente, Marc Quinn, Juan Uslé, Dorothy Cross, Franz Ackermann, Isaac Julien, João Penalva and Barry Flanagan. IMMA Members receive a 10% discount on IMMA editions. For further information visit www.imma.ie or contact the Development Office, IMMA, tel: 01 612 9902, email: editions@imma.ie

The Irish Museum of Modern Art is Ireland's leading national institution for the collection and presentation of modern and contemporary art.

The Museum's mission is to foster within society an awareness, understanding and involvement in the visual arts through policies and programmes which are excellent, innovative and inclusive. The Museum presents a wide variety of art in a dynamic programme of exhibitions, which regularly includes bodies of work from its own Collection and its award-winning Education and Community Department. It also creates more widespread access to art and artists through its Studio and National programmes.

The Museum is housed in the magnificent 17th-century Royal Hospital building, whose grounds include a formal garden, meadow and medieval burial grounds.



How to get there

Museum Entrance on Military Road.

By Bus: Buses to Heuston Station (5 minutes walk via Military Rd): 26 from Wellington Quay; 51, 79 from Aston Quay; 90 Dart Feeder Bus from Connolly and Tara Street Stations to Heuston Station. Buses to James St (5 minutes walk via steps to Bow Lane onto Irwin St and Military Rd): 123 from O'Connell St/Dame St; 51B, 78A from Aston Quay.

By car: 10 minute drive from city centre. Unlimited free car parking.

On foot: Approx. 30 to 40 minutes from city centre.

By train: 5 minute walk from Heuston Station; from Connolly and Tara Street Stations by 90 bus to Heuston Station.

By Luas: Red Line to Heuston Station.

Opening Hours

Tuesday - Saturday	10.00am - 5.30pm
except Wednesday	10.30am - 5.30pm
Sunday & Bank Holidays	12 noon - 5.30pm
Late Opening July – August Thursdays Evenings	Until 8.00pm
Monday	Closed
Last admission	5.15pm

Children under 12 must be accompanied by an adult.

Visitors are asked not to touch or photograph the artworks. Formal Gardens and Bookshop open Museum hours.



Grass Roots Café Open

Monday – Saturday	10.00am - 5.00pm
Sunday & Bank Holidays	12 noon - 5.00pm

Guided Tours of Exhibitions

Wednesday, Friday & Sunday 2.30pm. It is also possible to pre-book a guided tour. These free tours are available Tuesday - Friday at 10.00am, 11.45am, 2.30pm and 4.00pm. To book please telephone: 01 612 9967 or email: frontofhouse@imma.ie at least three weeks in advance of your intended visit.

Guided Heritage Tours

OPW Built Heritage Services offer guided heritage tours of the Royal Hospital Kilmainham during the Summer Season. Admission is free. Please contact the Museum for further details. A permanent heritage exhibition and video are on view all year round.

Visitor Facilities

With the exception of the Ground Floor East Wing Gallery, where access is limited, the Museum is wheelchair accessible. For information on set down facilities for disabled visitors please contact the information desk tel: 01 612 9967. Wheelchair available on request.

There are also adapted toilets, baby changing facilities and a locker room. A lunchroom is available for children's groups. Booking is required at least two weeks in advance, please contact the information desk for more details.

For further information please contact:

Irish Museum of Modern Art/Áras Nua-Ealaíne na hÉireann
Royal Hospital, Military Road, Kilmainham, Dublin 8
Telephone +353-1-612 9900 Fax +353-1-612 9999
Email info@imma.ie

www.imma.ie

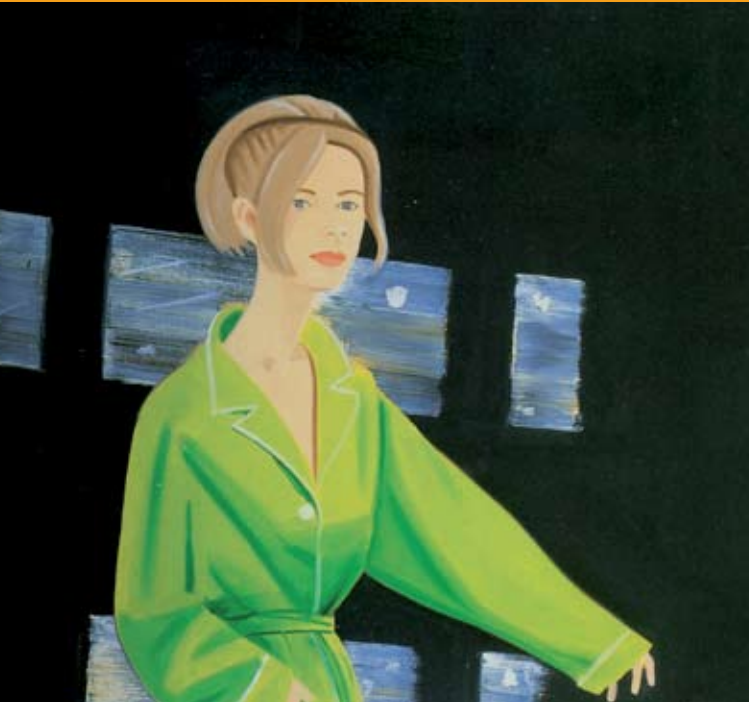
Irish Museum of Modern Art

Lucian Freud, Esther, 1982/83, oil on canvas, 35.6 x 30.5cm, Private Collection, © the artist



events
MAY > AUGUST 2007





Alex Katz, *Yvonne in Green*, (detail), 1995, Oil on linen, 48 x 72 inches, Courtesy of the Marlborough Gallery, New York, © DACS, London/VAGA, New York, 2007

EAST WING, FIRST FLOOR GALLERIES

Alex Katz: New York

This large-scale exhibition of the work of Alex Katz, one of the most influential American artists of the past 50 years, comprises some 40 paintings and aquatints, focusing mainly on his relationship with his native city. It is the first exhibition to concentrate primarily on this aspect of Katz's work.

The exhibition is curated by IMMA and Juan Manuel Bonet, independent curator and former Director of the Museo Nacional Centro de Arte Reina Sofia (MNCARS), Madrid.

The exhibition is presented in association with **THE IRISH TIMES**

A fully-illustrated catalogue, published in association with Charta, Milan, accompanies the exhibition. Price €35.00

UNTIL
20 MAY

EAST WING, FIRST FLOOR GALLERIES

Thomas Demand: L'Esprit d'Escalier

L'Esprit d'Escalier presents an overview of recent work by one of Germany's most innovative contemporary artists, Thomas Demand. It comprises 19 large-scale photographic pieces, plus a new screening device designed specially for this exhibition to show the work *Rolltreppe (Escalator)*, 2000. Ranging from 1995 to date, the exhibition presents such familiar works as *Archiv (Archive)*, 1995, alongside others never shown before, including *Landing*, 2006.

A full-colour publication, produced in association with Walther König Books, accompanies the exhibition. Price €42.00

COURTYARD

Alexander Calder and Joan Miró

Eleven works by two of the giants of 20th-century art – the American sculptor Alexander Calder and the Spanish painter and sculptor Joan Miró – make up this display in IMMA's courtyard. The exhibition takes as its *raison d'être* the close personal and

Joan Miró, *Personnage (Personage)*, 1967, Painted bronze (lost-wax casting): Fonderie T. Clementi, Meudon, Paris, 217 x 47 x 39 cm, Courtesy Succession Miró, Palma de Mallorca, and Galerie Lelong, Paris, © Succession Miró/ADAGP, Paris and DACS, London, 2007



UNTIL
4 JUNE

UNTIL
1 JULY

working relationship between the two artists over 50 years and concentrates on the later, highly-creative period of both their careers.

A fully-illustrated catalogue accompanies the exhibition. Price €16.00

NEW GALLERIES & EAST WING, GROUND FLOOR GALLERIES

Lucian Freud

Lucian Freud is arguably the most important and distinguished figurative painter working today. This exhibition comprises some 50 paintings and 20 works on paper and etchings from the last 60 years, several being completed just months prior to the exhibition and others never shown before in a public venue. Best known for his portraits and nudes, Freud's subjects include family, friends, lovers and fellow artists. The works are presented thematically and focus on several of the artist's key areas of interest, for example, paintings of the same person at different ages, self-portraits, animals and double portraits.

The exhibition is curated by Catherine Lampert, specialist on the work of Freud, a model for the artist's friend Frank Auerbach and former Director of the Whitechapel Gallery, London. The exhibition will travel to the Louisiana Museum, Denmark, and to the Gemeente Museum, the Hague, in 2008.

The exhibition is presented in association with **THE IRISH TIMES**

A fully-illustrated catalogue accompanies the exhibition.

EAST WING, FIRST FLOOR GALLERIES

Anne Madden

This exhibition is a major retrospective of one of Ireland's most highly-regarded painters. Spanning Madden's entire career, it presents some 60 works from the 1950s to date, and includes a number of recent works direct from the artist's studio. The

27 JUN -
30 SEPT



Anne Madden, *Aurora borealis, Arcs (detail)*, 2006, oil on linen, diptych: 178 x 178 each (x 2 panels), Collection of the artist

exhibition features some of her most important paintings, including *Self Portrait*, 1950, works from the series inspired by the Burren such as *Clare Land*, 1967, and her series of *Megaliths, Monoliths* and *Doorways*, from the 1970s. The exhibition also includes early sculptural works, paintings from her *Elegy, Pompeii, Odyssey* and *Garden* series and new paintings from her *Aurora Borealis* series.

An illustrated catalogue, with an essay by Enrique Juncosa, Director, IMMA, an essay and poem by the poet Derek Mahon, a previously-published essay by Anne Madden and a text by Marcelin Pleynet, writer, essayist and poet, accompanies the exhibition.

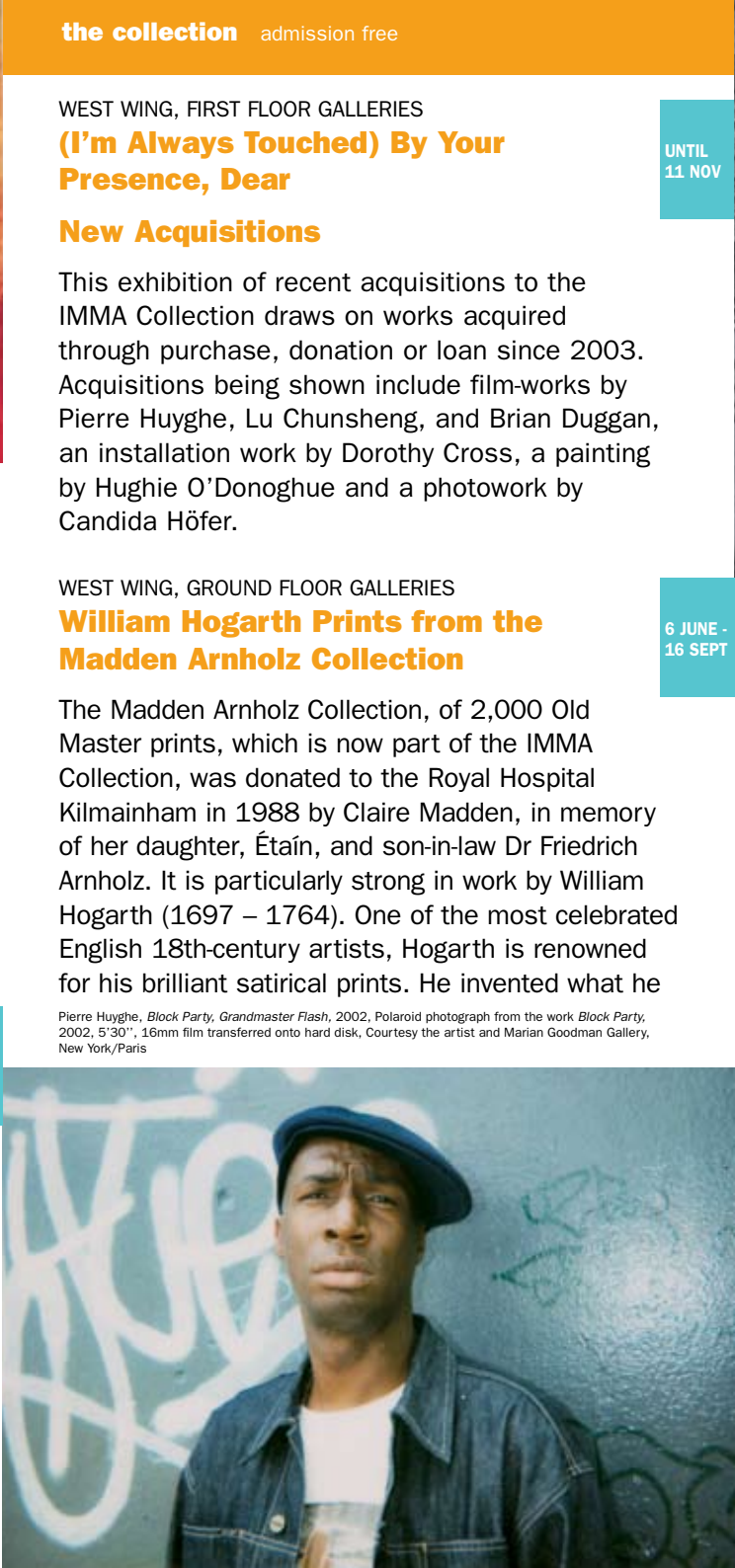
EAST WING, FIRST FLOOR GALLERIES

Nalini Malani

This first solo exhibition in Europe by Nalini Malani, one of India's most prominent artists, includes paintings, installations, video and performance. Known for her politically charged work, Malani has gained an international reputation for seeking to reposition the traditional content of Indian art within a contemporary media-based format. Her work reflects a deep commitment to women's issues, particularly with regard to social and family relationships.

A substantial catalogue, published by IMMA in association with Charta, Milan, accompanies the exhibition.

11 JUL -
14 OCT



Pierre Huyghe, *Block Party, Grandmaster Flash*, 2002, Polaroid photograph from the work *Block Party*, 2002, 5'30", 16mm film transferred onto hard disk, Courtesy the artist and Marian Goodman Gallery, New York/Paris

WEST WING, FIRST FLOOR GALLERIES

(I'm Always Touched) By Your Presence, Dear

New Acquisitions

This exhibition of recent acquisitions to the IMMA Collection draws on works acquired through purchase, donation or loan since 2003. Acquisitions being shown include film-works by Pierre Huyghe, Lu Chunsheng, and Brian Duggan, an installation work by Dorothy Cross, a painting by Hughie O'Donoghue and a photowork by Candida Höfer.

WEST WING, GROUND FLOOR GALLERIES

William Hogarth Prints from the Madden Arnholz Collection

The Madden Arnholz Collection, of 2,000 Old Master prints, which is now part of the IMMA Collection, was donated to the Royal Hospital Kilmainham in 1988 by Claire Madden, in memory of her daughter, Étaín, and son-in-law Dr Friedrich Arnholz. It is particularly strong in work by William Hogarth (1697 – 1764). One of the most celebrated English 18th-century artists, Hogarth is renowned for his brilliant satirical prints. He invented what he



William Hogarth, *A Rake's Progress*, (detail), Donation Madden Arnholz Collection, 1988, Irish Museum of Modern Art

called his comic history, lampooning all the social and political orders, especially the aristocracy, the emerging bourgeoisie and the church. His themes strike a strong contemporary tone in their confrontation of sexuality, social integration, crime and political corruption. The exhibition includes a number of complete sets of Hogarth's most popular series, including *Marriage-à-la-Mode*, *A Rake's Progress* and *A Harlot's Progress*.

GREAT HALL

James Coleman

This exhibition comprises the installation, *Lapsus Exposure*, 1992–94, one of a trilogy of works by the internationally-acclaimed Irish artist James Coleman. *I N T I A L S*, 1993-94, was shown in August 2006 and the final work *Background*, 1991-94, will be shown in 2008. This trilogy of pioneering works by Coleman from the 1990s was acquired by IMMA through funding from the Heritage Committee of the National Cultural Institutions in 2004.

27 JUL -
26 AUG